



# MONTHLY MEMBERSHIP PROGRESS REPORT

District 18 I

Results as of: 4/30/2014

GMT: CARL HARRELL

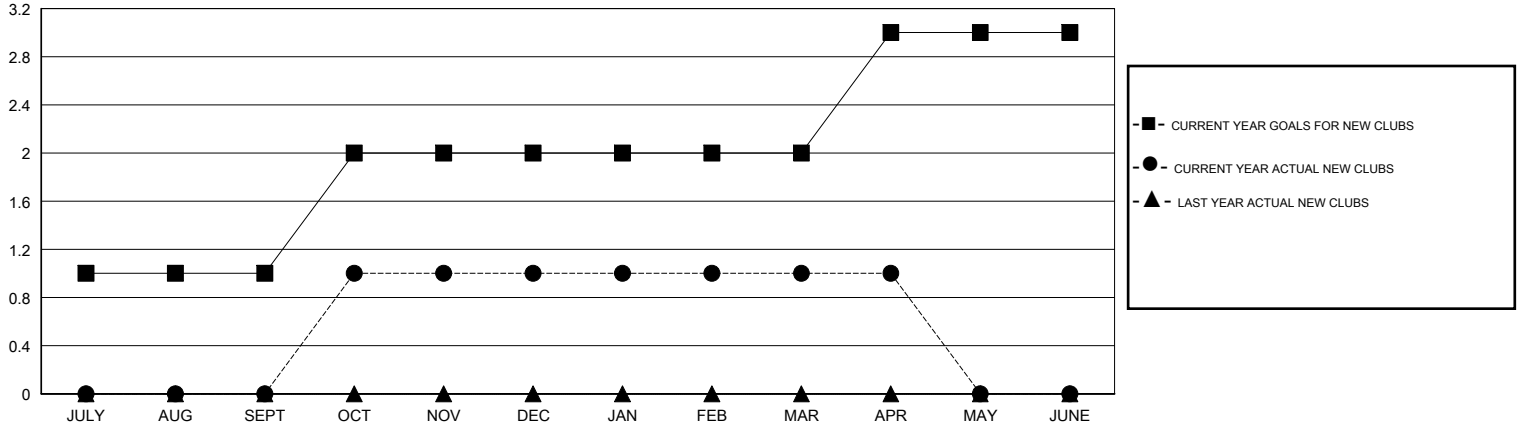
LOCATION GEORGIA

GMT CA 1

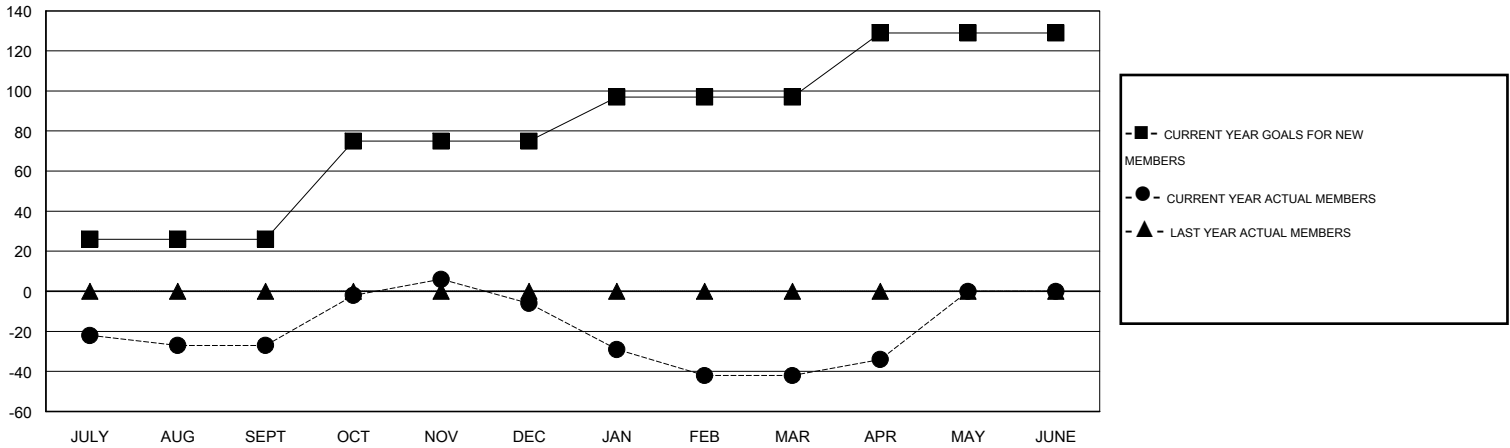
Clubs				
RESULTS FOR 2013-2014				
QUARTER	NEW CLUB GOAL	ACTUAL NEW CLUBS	ACTUAL DROPPED CLUBS	ACTUAL NET GAIN/LOSS
JULY/AUG/SEPT	1	0	0	0
OCT/NOV/DEC	1	1	0	1
JAN/FEB/MAR	0	0	0	0
APR/MAY/JUNE	1	0	0	0

Members				
RESULTS FOR 2013-2014				
QUARTER	NEW MEMBER GOAL	ACTUAL TOTAL MEMBERS ADDED	ACTUAL DROPPED MEMBERS	ACTUAL NET GAIN/LOSS
JULY/AUG/SEPT	26	24	51	-27
OCT/NOV/DEC	49	71	50	21
JAN/FEB/MAR	22	34	70	-36
APR/MAY/JUNE	32	21	13	8

GOALS AND ACTUAL NEW CLUBS CUMULATIVE



GOALS AND ACTUAL MEMBERS CUMULATIVE



DROPPED CLUBS: 0
------------------

34 CLUBS OF 57 ADDED 1 OR MORE NEW MEMBERS

GENDER DISTRIBUTION	
MALE	958 (67.90%)
FEMALE	453 (32.10%)

DROPPED MEMBERS	
DECEASED	21
CLUB CANCELLED	0
OTHER	163
<b>TOTAL</b>	<b>184</b>

[CLICK HERE FOR HEALTH ASSESSMENT DATA](#)

FAMILY UNIT MEMBERS	348
HEAD OF HOUSEHOLD	171
NON-HEAD OF HOUSEHOLD	177